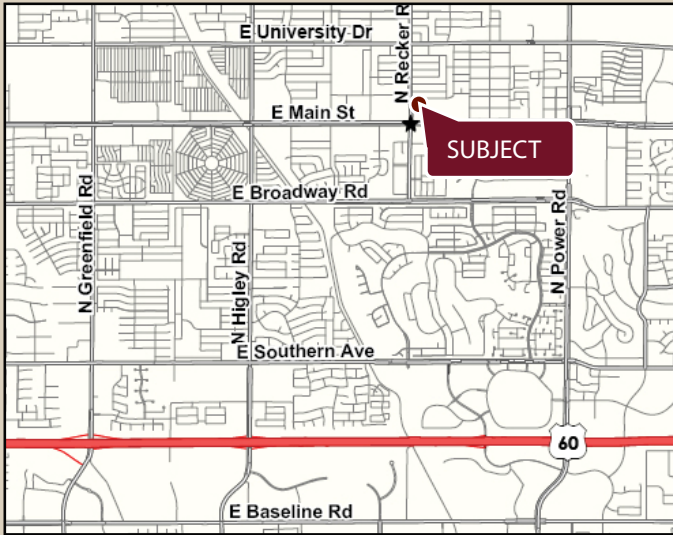


BUCKHORN PLAZA

NORTHEAST CORNER OF MAIN STREET & RECKER ROAD, MESA, AZ



Goodwill
Industries International, Inc.
**Opening 3rd
Qtr 2010**



AVAILABILITY

- 1,050-8,000 SF SHOP SPACE

TRAFFIC COUNTS

34,800 cars per day at intersection

NOTABLE TENANTS



2009 Demographics	1 MILE	3 MILE	5 MILE
Estimated Population	11,582	113,164	275,545
Avg. Household Income	\$45,535	\$57,735	\$64,648
Daytime Employment	8,485	41,547	76,078

Information contained herein is believed to be accurate but is not warranted as to accuracy and may change or be updated without notice. Seller or landlord makes no representation as to the environmental condition of the property and recommends purchaser's or tenant's independent investigation.

EXCLUSIVELY REPRESENTED BY



JASON FESSINGER
602.778.3833
jasonf@srgaz.com

BRAD BALBO
602.778.3831
bradb@srgaz.com

BUCKHORN PLAZA

NORTHEAST CORNER OF MAIN STREET & RECKER ROAD, MESA, AZ



#	TENANT	SQ. FT.
Major 1-2	Scrap Book Store	20,267 sf
Major 3	Grizzle Flooring	8,240 sf
Major 4	Available	8,000 sf
Major 5	Dollar General	8,000 sf
Major 6	Beall's Outlet	13,033 sf
Major 7	Goodwill	47,430 sf
A100	UPS	1,132 sf
A101	Available	1,354 sf
A102	Available	1,300 sf
A103	Available	1,300 sf
A104	Available	1,300 sf
B101	Available	2,358 sf
B102	Bon Worth	2,000 sf
B103	Available	2,500 sf
C101-102	Family Baptist	3,223 sf

#	TENANT	SQ.FT.
C103	Available	1,050 sf
C104	Available	1,470 sf
C105	LD Nails	980 sf
C106	Sinclair Travel	1,015 sf
C107	Available	1,050 sf
C108	Kay's Fashion	1,200 sf
C109	Ma's Swimwear	1,586 sf
D101	Supermat Laundry	2,000 sf
D102	Available	2,241 sf
D104	Available	1,955 sf
D106	Available	1,318 sf



Information contained herein is believed to be accurate but is not warranted as to accuracy and may change or be updated without notice. Seller or landlord makes no representation as to the environmental condition of the property and recommends purchaser's or tenant's independent investigation.

EXCLUSIVELY REPRESENTED BY



JASON FESSINGER
602.778.3833
jasonf@srgaz.com

BRAD BALBO
602.778.3831
bradb@srgaz.com

DEMOGRAPHIC PROFILE EXPANDED

1990 - 2000 Census, 2009 Estimates & 2014 Projections

Calculated using Proportional Block Groups

Prepared For



Lat/Lon: 33.415547/-111.701992

February 2010

RF5

E Main St & N Recker Rd Mesa, Arizona	1.00 mi radius		3.00 mi radius		5.00 mi radius	
Population						
Estimated Population (2009)	11,582		113,164		275,545	
Census Population (1990)	9,451		65,059		136,776	
Census Population (2000)	11,142		94,215		221,690	
Projected Population (2014)	11,743		126,756		304,491	
Forecasted Population (2019)	12,072		144,813		350,439	
Historical Annual Growth (1990 to 2000)	1,691	1.8%	29,155	4.5%	84,915	6.2%
Historical Annual Growth (2000 to 2009)	440	0.4%	18,950	2.2%	53,855	2.7%
Projected Annual Growth (2009 to 2014)	161	0.3%	13,592	2.4%	28,945	2.1%
Est. Population Density (2009)	3,689.71	<i>psm</i>	4,004.97	<i>psm</i>	3,513.62	<i>psm</i>
Trade Area Size	3.14	<i>sq mi</i>	28.26	<i>sq mi</i>	78.42	<i>sq mi</i>
Households						
Estimated Households (2009)	5,287		43,592		97,303	
Census Households (1990)	4,869		27,667		53,984	
Census Households (2000)	5,573		39,730		86,001	
Projected Households (2014)	4,991		45,251		100,082	
Forecasted Households (2019)	7,759		70,370		155,635	
Households with Children (2009)	561	10.6%	11,348	26.0%	30,946	31.8%
Average Household Size (2009)	1.97		2.56		2.81	
Average Household Income						
Est. Average Household Income (2009)	\$45,535		\$57,735		\$64,648	
Proj. Average Household Income (2014)	\$47,845		\$62,326		\$69,137	
Average Family Income (2009)	\$57,474		\$68,434		\$75,434	
Median Household Income						
Est. Median Household Income (2009)	\$37,950		\$53,798		\$60,478	
Proj. Median Household Income (2014)	\$40,946		\$58,639		\$65,827	
Median Family Income (2009)	\$49,242		\$64,527		\$70,579	
Per Capita Income						
Est. Per Capita Income (2009)	\$24,706		\$22,785		\$23,124	
Proj. Per Capita Income (2014)	\$24,180		\$22,734		\$22,990	
Per Capita Income Est. 5 year change	-\$526	-2.1%	-\$51	-0.2%	-\$134	-0.6%
Other Income						
Est. Median Disposable Income (2009)	\$33,142		\$45,012		\$49,781	
Est. Median Disposable Income (2014)	\$35,338		\$48,510		\$53,635	
Disposable Income Est. 5 year change	\$2,196	6.6%	\$3,498	7.8%	\$3,854	7.7%
Est. Average Household Net Worth (2009)	\$372,401		\$465,130		\$514,755	
Daytime Demos						
Total Number of Businesses (2009)	473		3,250		6,514	
Total Number of Employees (2009)	8,485		41,547		76,078	
Company Headqtrs: Businesses (2009)	1	0.2%	3	0.1%	12	0.2%
Company Headqtrs: Employees (2009)	8	0.1%	28	0.1%	642	0.8%
Unemployment Rate (2009)	2.70%		3.20%		3.80%	
Employee Population per Business	18.0 to 1		12.8 to 1		11.7 to 1	
Residential Population per Business	24.5 to 1		34.8 to 1		42.3 to 1	

This report was produced using data from private and government sources deemed to be reliable. The information herein is provided without representation or warranty.

DEMOGRAPHIC PROFILE EXPANDED

1990 - 2000 Census, 2009 Estimates & 2014 Projections

Calculated using Proportional Block Groups

Prepared For



Lat/Lon: 33.415547/-111.701992

February 2010

RF5

E Main St & N Recker Rd Mesa, Arizona

	1.00 mi radius		3.00 mi radius		5.00 mi radius	
Race & Ethnicity						
White (2009)	10,499	90.6%	99,331	87.8%	239,088	86.8%
Black or African American (2009)	213	1.8%	2,929	2.6%	7,353	2.7%
American Indian & Alaska Native (2009)	136	1.2%	1,308	1.2%	3,150	1.1%
Asian (2009)	134	1.2%	2,119	1.9%	5,684	2.1%
Hawaiian & Pacific Islander (2009)	15	0.1%	191	0.2%	629	0.2%
Other Race (2009)	329	2.8%	4,508	4.0%	12,769	4.6%
Two or More Races (2009)	257	2.2%	2,779	2.5%	6,872	2.5%
Not Hispanic or Latino Population (2009)	9,792	84.5%	92,853	82.1%	222,615	80.8%
Hispanic or Latino Population (2009)	1,790	15.5%	20,311	17.9%	52,930	19.2%
Not of Hispanic Origin Population (1990)	9,110	96.4%	61,461	94.5%	128,156	93.7%
Hispanic Origin Population (1990)	341	3.6%	3,598	5.5%	8,620	6.3%
Not Hispanic or Latino Population (2000)	10,518	94.4%	86,128	91.4%	198,895	89.7%
Hispanic or Latino Population (2000)	624	5.6%	8,087	8.6%	22,795	10.3%
Not Hispanic or Latino Population (2014)	9,599	81.7%	100,650	79.4%	238,125	78.2%
Hispanic or Latino Population (2014)	2,144	18.3%	26,106	20.6%	66,365	21.8%
Hist. Hispanic Ann Growth (1990 to 2009)	1,449	22.4%	16,713	24.4%	44,310	27.1%
Proj. Hispanic Ann Growth (2009 to 2014)	354	4.0%	5,795	5.7%	13,435	5.1%
Age Distribution						
Age 0 to 4 yrs (2009)	374	3.2%	7,217	6.4%	19,959	7.2%
Age 5 to 9 yrs (2009)	377	3.3%	7,339	6.5%	20,283	7.4%
Age 10 to 14 yrs (2009)	362	3.1%	7,158	6.3%	19,794	7.2%
Age 15 to 19 yrs (2009)	351	3.0%	6,427	5.7%	17,817	6.5%
Age 20 to 24 yrs (2009)	315	2.7%	5,111	4.5%	13,850	5.0%
Age 25 to 29 yrs (2009)	342	3.0%	5,813	5.1%	15,577	5.7%
Age 30 to 34 yrs (2009)	364	3.1%	6,332	5.6%	17,268	6.3%
Age 35 to 39 yrs (2009)	395	3.4%	6,811	6.0%	18,453	6.7%
Age 40 to 44 yrs (2009)	387	3.3%	6,686	5.9%	18,221	6.6%
Age 45 to 49 yrs (2009)	416	3.6%	6,400	5.7%	17,262	6.3%
Age 50 to 54 yrs (2009)	461	4.0%	5,988	5.3%	15,571	5.7%
Age 55 to 59 yrs (2009)	662	5.7%	5,961	5.3%	14,489	5.3%
Age 60 to 64 yrs (2009)	854	7.4%	6,357	5.6%	14,140	5.1%
Age 65 to 74 yrs (2009)	1,981	17.1%	12,877	11.4%	25,301	9.2%
Age 75 to 84 yrs (2009)	2,348	20.3%	11,625	10.3%	19,790	7.2%
Age 85 yrs plus (2009)	1,591	13.7%	5,063	4.5%	7,770	2.8%
Median Age (2009)	61.5 yrs		44.4 yrs		39.5 yrs	
Gender Age Distribution						
Female Population (2009)	6,628	57.2%	59,527	52.6%	141,816	51.5%
Age 0 to 19 yrs (2009)	683	10.3%	13,799	23.2%	38,324	27.0%
Age 20 to 64 yrs (2009)	2,259	34.1%	28,535	47.9%	73,492	51.8%
Age 65 yrs plus (2009)	3,686	55.6%	17,194	28.9%	30,000	21.2%
Female Median Age (2009)	65.0 yrs		46.6 yrs		41.1 yrs	
Male Population (2009)	4,954	42.8%	53,637	47.4%	133,729	48.5%
Age 0 to 19 yrs (2009)	781	15.8%	14,343	26.7%	39,529	29.6%
Age 20 to 64 yrs (2009)	1,939	39.1%	26,924	50.2%	71,339	53.3%
Age 65 yrs plus (2009)	2,234	45.1%	12,370	23.1%	22,860	17.1%
Male Median Age (2009)	57.1 yrs		41.8 yrs		37.7 yrs	

This report was produced using data from private and government sources deemed to be reliable. The information herein is provided without representation or warranty.

DEMOGRAPHIC PROFILE EXPANDED

1990 - 2000 Census, 2009 Estimates & 2014 Projections

Calculated using Proportional Block Groups

Prepared For



Lat/Lon: 33.415547/-111.701992

February 2010

RF5

E Main St & N Recker Rd Mesa, Arizona	1.00 mi radius		3.00 mi radius		5.00 mi radius	
Household Income Distribution						
HH Income \$200,000 or More (2009)	79	1.5%	914	2.1%	3,094	3.2%
HH Income \$150,000 to \$199,999 (2009)	48	0.9%	1,257	2.9%	3,653	3.8%
HH Income \$100,000 to \$149,999 (2009)	300	5.7%	5,335	12.2%	13,665	14.0%
HH Income \$75,000 to \$99,999 (2009)	516	9.8%	6,075	13.9%	14,176	14.6%
HH Income \$50,000 to \$74,999 (2009)	861	16.3%	8,880	20.4%	20,475	21.0%
HH Income \$35,000 to \$49,999 (2009)	945	17.9%	7,023	16.1%	15,032	15.4%
HH Income \$25,000 to \$34,999 (2009)	780	14.8%	4,796	11.0%	9,856	10.1%
HH Income \$15,000 to \$24,999 (2009)	924	17.5%	5,251	12.0%	9,803	10.1%
HH Income \$0 to \$14,999 (2009)	834	15.8%	4,061	9.3%	7,549	7.8%
HH Income \$35,000+ (2009)	2,749	52.0%	29,485	67.6%	70,096	72.0%
HH Income \$75,000+ (2009)	943	17.8%	13,582	31.2%	34,589	35.5%
Housing						
Total Housing Units (2009)	6,988		60,073		129,836	
Housing Units, Occupied (2009)	5,287	75.7%	43,592	72.6%	97,303	74.9%
<i>Housing Units, Owner-Occupied (2009)</i>	3,646	69.0%	32,928	75.5%	76,168	78.3%
<i>Housing Units, Renter-Occupied (2009)</i>	1,641	31.0%	10,664	24.5%	21,135	21.7%
Housing Units, Vacant (2009)	1,701	24.3%	16,481	27.4%	32,533	25.1%
Median Years in Residence (2009)	4.1	yrs	3.5	yrs	3.2	yrs
Marital Status						
Never Married (2009)	857	8.2%	14,317	15.6%	39,125	18.1%
Now Married (2009)	5,272	50.2%	55,226	60.4%	132,460	61.4%
Separated (2009)	665	6.3%	2,947	3.2%	6,313	2.9%
Widowed (2009)	2,599	24.7%	10,149	11.1%	17,334	8.0%
Divorced (2009)	1,111	10.6%	8,859	9.7%	20,359	9.4%
Household Type						
Population Family (2009)	7,427	64.1%	92,399	81.7%	234,861	85.2%
Population Non-Family (2009)	3,001	25.9%	19,034	16.8%	38,542	14.0%
Population Group Qtrs (2009)	1,154	10.0%	1,731	1.5%	2,142	0.8%
Family Households (2009)	2,676	50.6%	27,548	63.2%	65,810	67.6%
Married Couple With Children (2009)	349	6.6%	7,835	14.2%	22,092	16.7%
Average Family Household Size (2009)	2.78		3.35		3.57	
Non-Family Households (2009)	2,612	49.4%	16,044	36.8%	31,493	32.4%
Household Size						
1 Person Household (2009)	2,423	45.8%	14,003	32.1%	26,605	27.3%
2 Person Households (2009)	1,552	29.4%	11,986	27.5%	25,263	26.0%
3 Person Households (2009)	315	6.0%	3,795	8.7%	9,334	9.6%
4 Person Households (2009)	521	9.9%	7,310	16.8%	18,611	19.1%
5 Person Households (2009)	267	5.0%	3,673	8.4%	9,745	10.0%
6+ Person Households (2009)	209	3.9%	2,825	6.5%	7,744	8.0%
Household Vehicles						
Total Vehicles Available (2009)	7,133		71,536		172,619	
Household: 0 Vehicles Available (2009)	571	10.8%	2,620	6.0%	4,346	4.5%
Household: 1 Vehicles Available (2009)	2,826	53.4%	19,047	43.7%	38,104	39.2%
Household: 2+ Vehicles Available (2009)	1,891	35.8%	21,925	50.3%	54,854	56.4%
Average Vehicles Per Household (2009)	1.3		1.6		1.8	

This report was produced using data from private and government sources deemed to be reliable. The information herein is provided without representation or warranty.

DEMOGRAPHIC PROFILE EXPANDED

1990 - 2000 Census, 2009 Estimates & 2014 Projections

Calculated using Proportional Block Groups

Prepared For



Lat/Lon: 33.415547/-111.701992

February 2010

RF5

E Main St & N Recker Rd Mesa, Arizona

	1.00 mi radius		3.00 mi radius		5.00 mi radius	
Labor Force						
Est. Labor: Population Age 16+ (2009)	10,401		90,082		211,723	
Est. Civilian Employed (2009)	3,546	34.1%	46,382	51.5%	119,196	56.3%
Est. Civilian Unemployed (2009)	282	2.7%	2,870	3.2%	7,949	3.8%
Est. in Armed Forces (2009)	6	0.1%	70	0.1%	177	0.1%
Est. not in Labor Force (2009)	6,566	63.1%	40,759	45.2%	84,401	39.9%
Occupation						
Occupation: Population Age 16+ (2000)	2,508		35,610		92,469	
Mgmt, Business, & Financial Operations (2000)	290	11.5%	4,800	13.5%	12,849	13.9%
Professional and Related (2000)	310	12.4%	6,618	18.6%	18,132	19.6%
Service (2000)	416	16.6%	4,604	12.9%	11,960	12.9%
Sales and Office (2000)	883	35.2%	11,456	32.2%	29,482	31.9%
Farming, Fishing, and Forestry (2000)	5	0.2%	54	0.2%	159	0.2%
Construct, Extraction, & Maintenance (2000)	286	11.4%	3,818	10.7%	9,771	10.6%
Production, Transp. & Material Moving (2000)	319	12.7%	4,261	12.0%	10,116	10.9%
Percent White Collar Workers (2000)	59.1%		64.2%		65.4%	
Percent Blue Collar Workers (2000)	40.9%		35.8%		34.6%	
Consumer Expenditure (in \$,000,000s)						
Total Household Expenditure (2009)	\$217		\$2,093		\$5,038	
Total Non-Retail Expenditures (2009)	\$123	57.0%	\$1,204	57.5%	\$2,905	57.7%
Total Retail Expenditures (2009)	\$93	43.0%	\$890	42.5%	\$2,133	42.3%
Apparel (2009)	\$10	4.7%	\$100	4.8%	\$242	4.8%
Contributions (2009)	\$8	3.5%	\$76	3.6%	\$187	3.7%
Education (2009)	\$5	2.2%	\$48	2.3%	\$120	2.4%
Entertainment (2009)	\$12	5.5%	\$117	5.6%	\$282	5.6%
Food And Beverages (2009)	\$34	15.7%	\$323	15.4%	\$771	15.3%
Furnishings And Equipment (2009)	\$9	4.2%	\$92	4.4%	\$223	4.4%
Gifts (2009)	\$5	2.5%	\$54	2.6%	\$132	2.6%
Health Care (2009)	\$14	6.6%	\$130	6.2%	\$305	6.1%
Household Operations (2009)	\$7	3.3%	\$74	3.5%	\$182	3.6%
Miscellaneous Expenses (2009)	\$4	1.7%	\$35	1.7%	\$84	1.7%
Personal Care (2009)	\$3	1.5%	\$30	1.5%	\$73	1.4%
Personal Insurance (2009)	\$2	1.0%	\$21	1.0%	\$52	1.0%
Reading (2009)	\$1	0.3%	\$7	0.3%	\$16	0.3%
Shelter (2009)	\$42	19.3%	\$403	19.3%	\$972	19.3%
Tobacco (2009)	\$2	0.7%	\$14	0.7%	\$32	0.6%
Transportation (2009)	\$43	19.9%	\$422	20.2%	\$1,014	20.1%
Utilities (2009)	\$16	7.3%	\$148	7.1%	\$350	6.9%
Educational Attainment						
Adult Population (25 Years or Older) (2009)	9,802		79,911		183,842	
Elementary (0 to 8) (2009)	701	7.2%	4,161	5.2%	8,574	4.7%
Some High School (9 to 11) (2009)	947	9.7%	6,487	8.1%	13,886	7.6%
High School Graduate (12) (2009)	3,815	38.9%	25,390	31.8%	54,073	29.4%
Some College (13 to 16) (2009)	2,193	22.4%	19,859	24.9%	46,136	25.1%
Associate Degree Only (2009)	403	4.1%	6,207	7.8%	15,888	8.6%
Bachelor Degree Only (2009)	1,184	12.1%	11,771	14.7%	30,063	16.4%
Graduate Degree (2009)	558	5.7%	6,037	7.6%	15,221	8.3%

This report was produced using data from private and government sources deemed to be reliable. The information herein is provided without representation or warranty.

DEMOGRAPHIC PROFILE EXPANDED

1990 - 2000 Census, 2009 Estimates & 2014 Projections

Calculated using Proportional Block Groups

Prepared For



Lat/Lon: 33.415547/-111.701992

February 2010

RF5

E Main St & N Recker Rd Mesa, Arizona

Units In Structure

	1.00 mi radius		3.00 mi radius		5.00 mi radius	
1 Detached Unit (2000)	3,383	47.6%	25,661	48.5%	56,645	51.2%
1 Attached Unit (2000)	444	6.2%	3,680	7.0%	6,199	5.6%
2 to 4 Units (2000)	512	7.2%	2,171	4.1%	3,462	3.1%
5 to 9 Units (2000)	224	3.2%	1,333	2.5%	3,033	2.7%
10 to 19 Units (2000)	199	2.8%	1,747	3.3%	3,117	2.8%
20 to 49 Units (2000)	173	2.4%	694	1.3%	956	0.9%
50 or more Units (2000)	456	6.4%	1,913	3.6%	3,599	3.3%
Mobile Home or Trailer (2000)	1,673	23.5%	14,929	28.2%	31,617	28.6%
Other Structure (2000)	50	0.7%	816	1.5%	2,061	1.9%

Homes Built By Year

Homes Built 1999 to 2000	145	2.0%	1,652	3.1%	5,135	4.6%
Homes Built 1995 to 1998	638	9.0%	7,539	14.2%	19,420	17.5%
Homes Built 1990 to 1994	369	5.2%	7,220	13.6%	16,879	15.2%
Homes Built 1980 to 1989	1,996	28.1%	20,949	39.6%	39,367	35.6%
Homes Built 1970 to 1979	2,456	34.5%	11,452	21.6%	21,865	19.8%
Homes Built 1960 to 1969	1,091	15.3%	2,795	5.3%	5,761	5.2%
Homes Built 1950 to 1959	284	4.0%	838	1.6%	1,431	1.3%
Homes Built Before 1949	135	1.9%	497	0.9%	830	0.8%

Home Values

Home Values \$1,000,000 or More (2000)	6	0.2%	9	0.0%	33	0.1%
Home Values \$500,000 to \$999,999 (2000)	0		97	0.4%	387	0.7%
Home Values \$400,000 to \$499,999 (2000)	3	0.1%	141	0.6%	434	0.8%
Home Values \$300,000 to \$399,999 (2000)	5	0.2%	409	1.7%	1,536	3.0%
Home Values \$200,000 to \$299,999 (2000)	85	2.8%	1,032	4.4%	4,882	9.4%
Home Values \$150,000 to \$199,999 (2000)	215	7.2%	3,138	13.4%	9,032	17.4%
Home Values \$100,000 to \$149,999 (2000)	890	29.9%	11,725	50.0%	23,332	44.9%
Home Values \$70,000 to \$99,999 (2000)	1,492	50.1%	5,852	25.0%	10,330	19.9%
Home Values \$50,000 to \$69,999 (2000)	266	8.9%	836	3.6%	1,447	2.8%
Home Values \$25,000 to \$49,999 (2000)	10	0.3%	112	0.5%	305	0.6%
Home Values \$0 to \$24,999 (2000)	6	0.2%	81	0.3%	191	0.4%
Owner Occupied Median Home Value (2000)	\$101,764		\$121,332		\$135,681	
Renter Occupied Median Rent (2000)	\$667		\$668		\$656	

Transportation To Work

Drive to Work Alone (2000)	2,115	84.3%	28,200	79.1%	73,179	79.0%
Drive to Work in Carpool (2000)	182	7.2%	4,595	12.9%	12,305	13.3%
Travel to Work - Public Transportation (2000)	7	0.3%	269	0.8%	664	0.7%
Drive to Work on Motorcycle (2000)	4	0.2%	183	0.5%	475	0.5%
Walk or Bicycle to Work (2000)	117	4.6%	814	2.3%	1,874	2.0%
Other Means (2000)	19	0.7%	222	0.6%	596	0.6%
Work at Home (2000)	66	2.6%	1,375	3.9%	3,524	3.8%

Travel Time

Travel to Work in 14 Minutes or Less (2000)	637	26.1%	8,210	23.9%	20,122	22.6%
Travel to Work in 14 to 29 Minutes (2000)	724	29.7%	10,249	29.9%	28,799	32.3%
Travel to Work in 30 to 59 Minutes (2000)	896	36.7%	13,075	38.1%	33,559	37.7%
Travel to Work in 60 Minutes or More (2000)	185	7.6%	2,750	8.0%	6,613	7.4%
Average Travel Time to Work (2000)	27.6	mins	26.9	mins	26.7	mins

This report was produced using data from private and government sources deemed to be reliable. The information herein is provided without representation or warranty.