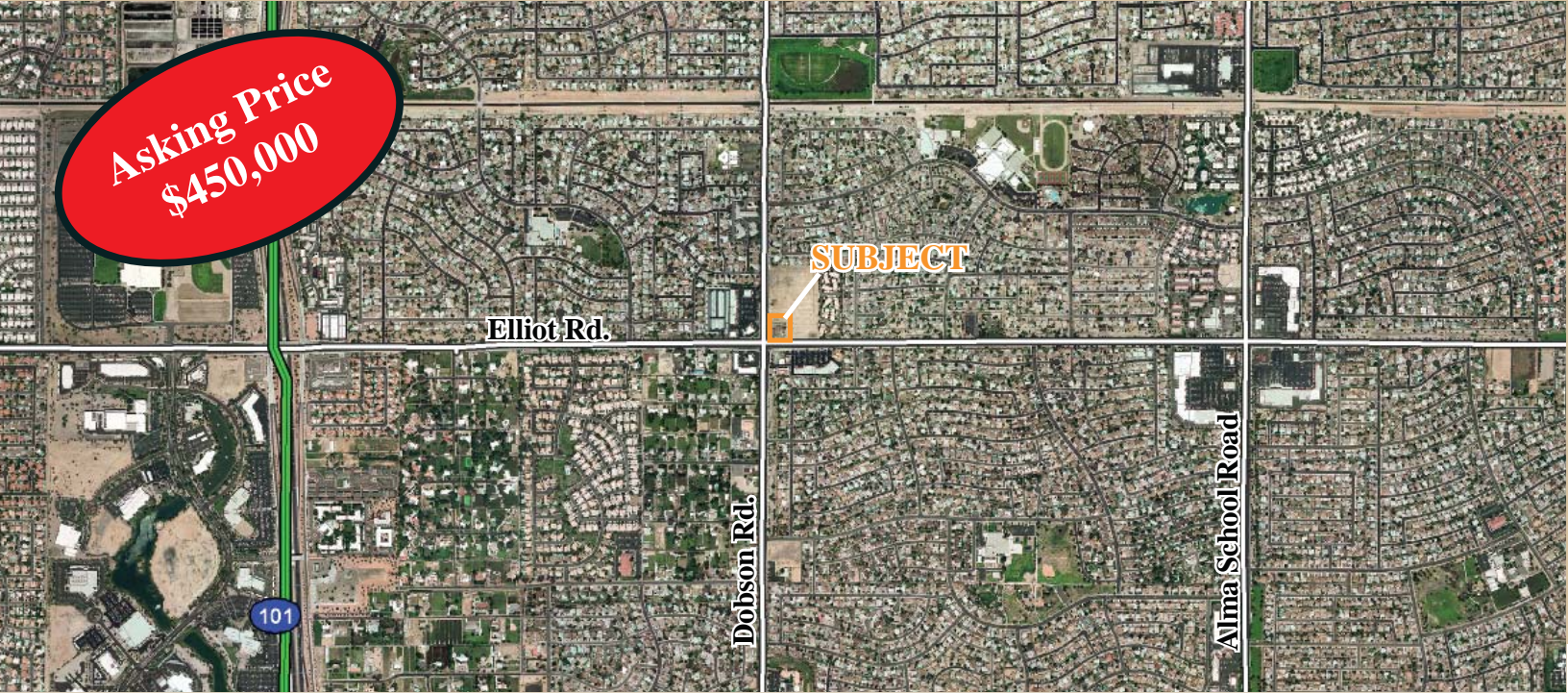




# PAD SITE FOR SALE

NORTHEAST CORNER OF DOBSON ROAD & ELLIOT ROAD, CHANDLER, AZ

**Asking Price  
\$450,000**



### AVAILABILITY

- HARD CORNER PAD AVAILABLE FOR PURCHASE

### FEATURES

- Close proximity to Loop 101 & US 60 freeways
- Great access
- Dense trade area
- Strong incomes and great daytime employment

2009 Demographics	1 MILE	3 MILE	5 MILE
Estimated Population	16,259	141,538	420,123
Avg. Household Income	\$67,708	\$77,538	\$70,796
Daytime Employment	3,681	68,578	207,170

Information contained herein is believed to be accurate but is not warranted as to accuracy and may change or be updated without notice. Seller or landlord makes no representation as to the environmental condition of the property and recommends purchaser's or tenant's independent investigation.



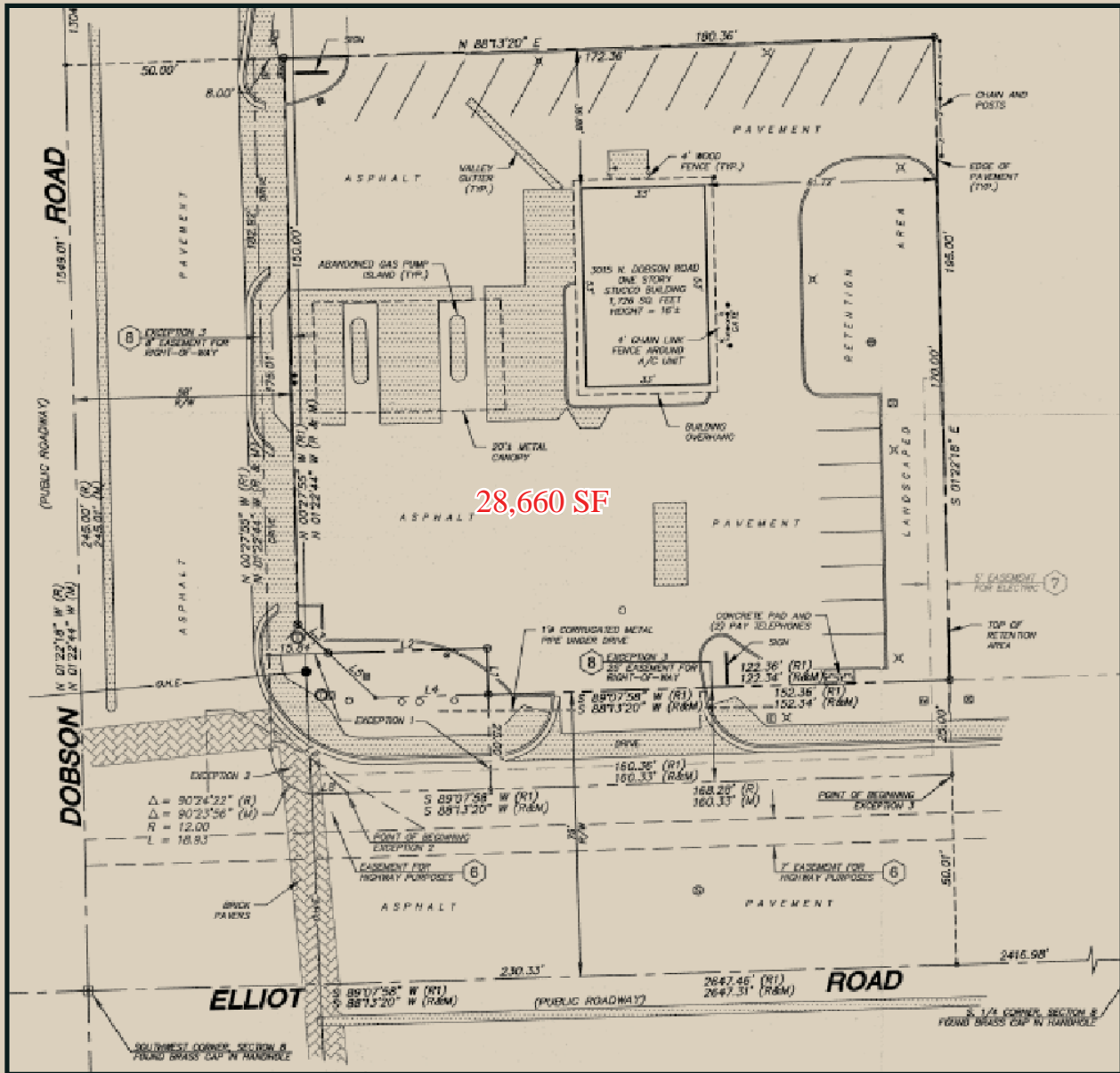
EXCLUSIVELY REPRESENTED BY

**MATT MILINOVICH**  
602.778.3830  
mattm@srgaz.com

**JASON FESSINGER**  
602.778.3833  
jasonf@srgaz.com

# PAD SITE FOR SALE

NORTHEAST CORNER OF DOBSON ROAD & ELLIOT ROAD, CHANDLER, AZ



Information contained herein is believed to be accurate but is not warranted as to accuracy and may change or be updated without notice. Seller or landlord makes no representation as to the environmental condition of the property and recommends purchaser's or tenant's independent investigation.

EXCLUSIVELY REPRESENTED BY



**STRATEGIC**  
RETAIL GROUP

MATT MILINOVICH  
602.778.3830  
mattm@srgaz.com

JASON FESSINGER  
602.778.3833  
jasonf@srgaz.com

# DEMOGRAPHIC PROFILE EXPANDED

1990 - 2000 Census, 2009 Estimates & 2014 Projections

Calculated using Proportional Block Groups

Prepared For



Lat/Lon: 33.349567/-111.876504

February 2010

RF5

N Dobson Rd & W Elliot Rd Chandler, Arizona	1.00 mi radius		3.00 mi radius		5.00 mi radius	
<b>Population</b>						
Estimated Population (2009)	16,259		141,538		420,123	
Census Population (1990)	16,670		113,697		271,125	
Census Population (2000)	16,353		131,261		373,089	
Projected Population (2014)	16,998		152,466		464,938	
Forecasted Population (2019)	17,353		164,210		515,870	
Historical Annual Growth (1990 to 2000)	-317	-0.2%	17,565	1.5%	101,964	3.8%
Historical Annual Growth (2000 to 2009)	-94	-0.1%	10,277	0.9%	47,034	1.4%
Projected Annual Growth (2009 to 2014)	739	0.9%	10,928	1.5%	44,815	2.1%
Est. Population Density (2009)	5,178.14 <i>psm</i>		5,044.13 <i>psm</i>		5,382.68 <i>psm</i>	
Trade Area Size	3.14 <i>sq mi</i>		28.06 <i>sq mi</i>		78.05 <i>sq mi</i>	
<b>Households</b>						
Estimated Households (2009)	5,299		48,097		141,279	
Census Households (1990)	5,560		39,626		100,267	
Census Households (2000)	5,833		48,544		137,282	
Projected Households (2014)	5,220		48,642		146,698	
Forecasted Households (2019)	8,114		75,632		228,097	
Households with Children (2009)	2,126	40.1%	17,724	36.9%	52,250	37.0%
Average Household Size (2009)	3.06		2.93		2.96	
<b>Average Household Income</b>						
Est. Average Household Income (2009)	\$67,708		\$77,538		\$70,796	
Proj. Average Household Income (2014)	\$71,567		\$81,667		\$74,343	
Average Family Income (2009)	\$73,914		\$88,753		\$82,464	
<b>Median Household Income</b>						
Est. Median Household Income (2009)	\$70,120		\$74,584		\$68,169	
Proj. Median Household Income (2014)	\$75,873		\$80,011		\$72,985	
Median Family Income (2009)	\$75,384		\$85,429		\$79,228	
<b>Per Capita Income</b>						
Est. Per Capita Income (2009)	\$22,092		\$26,525		\$23,982	
Proj. Per Capita Income (2014)	\$22,000		\$26,215		\$23,613	
Per Capita Income Est. 5 year change	-\$92	-0.4%	-\$309	-1.2%	-\$369	-1.5%
<b>Other Income</b>						
Est. Median Disposable Income (2009)	\$57,174		\$60,072		\$55,250	
Est. Median Disposable Income (2014)	\$61,100		\$63,821		\$58,586	
Disposable Income Est. 5 year change	\$3,925	6.9%	\$3,749	6.2%	\$3,336	6.0%
Est. Average Household Net Worth (2009)	\$523,630		\$590,961		\$523,866	
<b>Daytime Demos</b>						
Total Number of Businesses (2009)	451		5,380		14,949	
Total Number of Employees (2009)	3,681		68,578		207,170	
Company Headqtrs: Businesses (2009)	2	0.5%	24	0.4%	67	0.4%
Company Headqtrs: Employees (2009)	13	0.4%	1,315	1.9%	5,167	2.5%
Unemployment Rate (2009)	4.00%		4.20%		4.90%	
Employee Population per Business	8.2 to 1		12.7 to 1		13.9 to 1	
Residential Population per Business	36.1 to 1		26.3 to 1		28.1 to 1	

This report was produced using data from private and government sources deemed to be reliable. The information herein is provided without representation or warranty.

# DEMOGRAPHIC PROFILE EXPANDED

1990 - 2000 Census, 2009 Estimates & 2014 Projections

Calculated using Proportional Block Groups

Prepared For



Lat/Lon: 33.349567/-111.876504

February 2010

RF5

## N Dobson Rd & W Elliot Rd Chandler, Arizona

	1.00 mi radius		3.00 mi radius		5.00 mi radius	
<b>Race &amp; Ethnicity</b>						
White (2009)	13,095	80.5%	112,422	79.4%	312,150	74.3%
Black or African American (2009)	731	4.5%	6,268	4.4%	21,046	5.0%
American Indian & Alaska Native (2009)	254	1.6%	1,999	1.4%	9,438	2.2%
Asian (2009)	569	3.5%	7,105	5.0%	22,015	5.2%
Hawaiian & Pacific Islander (2009)	50	0.3%	333	0.2%	1,251	0.3%
Other Race (2009)	1,067	6.6%	9,126	6.4%	40,548	9.7%
Two or More Races (2009)	495	3.0%	4,285	3.0%	13,676	3.3%
Not Hispanic or Latino Population (2009)	12,581	77.4%	108,478	76.6%	296,309	70.5%
Hispanic or Latino Population (2009)	3,678	22.6%	33,060	23.4%	123,815	29.5%
Not of Hispanic Origin Population (1990)	15,245	91.5%	104,012	91.5%	232,655	85.8%
Hispanic Origin Population (1990)	1,425	8.5%	9,684	8.5%	38,470	14.2%
Not Hispanic or Latino Population (2000)	14,092	86.2%	112,133	85.4%	290,969	78.0%
Hispanic or Latino Population (2000)	2,261	13.8%	19,128	14.6%	82,120	22.0%
Not Hispanic or Latino Population (2014)	12,736	74.9%	112,989	74.1%	316,099	68.0%
Hispanic or Latino Population (2014)	4,263	25.1%	39,477	25.9%	148,839	32.0%
Hist. Hispanic Ann Growth (1990 to 2009)	2,253	8.3%	23,376	12.7%	85,345	11.7%
Proj. Hispanic Ann Growth (2009 to 2014)	584	3.2%	6,416	3.9%	25,024	4.0%
<b>Age Distribution</b>						
Age 0 to 4 yrs (2009)	1,156	7.1%	9,883	7.0%	34,033	8.1%
Age 5 to 9 yrs (2009)	1,277	7.9%	10,449	7.4%	32,804	7.8%
Age 10 to 14 yrs (2009)	1,354	8.3%	10,794	7.6%	30,962	7.4%
Age 15 to 19 yrs (2009)	1,270	7.8%	10,598	7.5%	30,431	7.2%
Age 20 to 24 yrs (2009)	967	6.0%	9,546	6.7%	33,662	8.0%
Age 25 to 29 yrs (2009)	1,181	7.3%	10,591	7.5%	35,226	8.4%
Age 30 to 34 yrs (2009)	1,283	7.9%	10,668	7.5%	34,664	8.3%
Age 35 to 39 yrs (2009)	1,334	8.2%	10,959	7.7%	33,265	7.9%
Age 40 to 44 yrs (2009)	1,406	8.6%	11,495	8.1%	31,841	7.6%
Age 45 to 49 yrs (2009)	1,444	8.9%	11,756	8.3%	30,102	7.2%
Age 50 to 54 yrs (2009)	1,136	7.0%	10,479	7.4%	26,124	6.2%
Age 55 to 59 yrs (2009)	746	4.6%	7,547	5.3%	20,043	4.8%
Age 60 to 64 yrs (2009)	542	3.3%	5,398	3.8%	14,879	3.5%
Age 65 to 74 yrs (2009)	603	3.7%	6,004	4.2%	17,322	4.1%
Age 75 to 84 yrs (2009)	371	2.3%	3,538	2.5%	9,984	2.4%
Age 85 yrs plus (2009)	188	1.2%	1,833	1.3%	4,783	1.1%
Median Age (2009)	32.8	yrs	33.7	yrs	31.6	yrs
<b>Gender Age Distribution</b>						
Female Population (2009)	8,015	49.3%	70,825	50.0%	207,138	49.3%
Age 0 to 19 yrs (2009)	2,412	30.1%	20,342	28.7%	62,637	30.2%
Age 20 to 64 yrs (2009)	4,948	61.7%	43,951	62.1%	126,260	61.0%
Age 65 yrs plus (2009)	655	8.2%	6,532	9.2%	18,241	8.8%
Female Median Age (2009)	33.7	yrs	34.9	yrs	32.4	yrs
Male Population (2009)	8,245	50.7%	70,713	50.0%	212,985	50.7%
Age 0 to 19 yrs (2009)	2,646	32.1%	21,381	30.2%	65,592	30.8%
Age 20 to 64 yrs (2009)	5,091	61.8%	44,489	62.9%	133,544	62.7%
Age 65 yrs plus (2009)	507	6.2%	4,843	6.8%	13,849	6.5%
Male Median Age (2009)	31.9	yrs	32.6	yrs	30.8	yrs

This report was produced using data from private and government sources deemed to be reliable. The information herein is provided without representation or warranty.

# DEMOGRAPHIC PROFILE EXPANDED

1990 - 2000 Census, 2009 Estimates & 2014 Projections

Calculated using Proportional Block Groups

Prepared For



Lat/Lon: 33.349567/-111.876504

February 2010

RF5

## N Dobson Rd & W Elliot Rd Chandler, Arizona

	1.00 mi radius		3.00 mi radius		5.00 mi radius	
<b>Household Income Distribution</b>						
HH Income \$200,000 or More (2009)	67	1.3%	2,180	4.5%	5,330	3.8%
HH Income \$150,000 to \$199,999 (2009)	281	5.3%	2,948	6.1%	7,362	5.2%
HH Income \$100,000 to \$149,999 (2009)	965	18.2%	9,057	18.8%	23,616	16.7%
HH Income \$75,000 to \$99,999 (2009)	1,063	20.1%	8,491	17.7%	22,759	16.1%
HH Income \$50,000 to \$74,999 (2009)	1,371	25.9%	10,941	22.7%	30,099	21.3%
HH Income \$35,000 to \$49,999 (2009)	753	14.2%	6,259	13.0%	19,902	14.1%
HH Income \$25,000 to \$34,999 (2009)	317	6.0%	3,529	7.3%	11,974	8.5%
HH Income \$15,000 to \$24,999 (2009)	287	5.4%	2,594	5.4%	10,308	7.3%
HH Income \$0 to \$14,999 (2009)	194	3.7%	2,098	4.4%	9,927	7.0%
HH Income \$35,000+ (2009)	4,501	84.9%	39,876	82.9%	109,069	77.2%
HH Income \$75,000+ (2009)	2,376	44.8%	22,676	47.1%	59,068	41.8%
<b>Housing</b>						
Total Housing Units (2009)	5,623		52,229		155,609	
Housing Units, Occupied (2009)	5,299	94.2%	48,097	92.1%	141,279	90.8%
<i>Housing Units, Owner-Occupied (2009)</i>	3,991	75.3%	33,100	68.8%	85,610	60.6%
<i>Housing Units, Renter-Occupied (2009)</i>	1,308	24.7%	14,997	31.2%	55,669	39.4%
Housing Units, Vacant (2009)	324	5.8%	4,132	7.9%	14,330	9.2%
Median Years in Residence (2009)	3.5	yrs	3.2	yrs	2.7	yrs
<b>Marital Status</b>						
Never Married (2009)	3,498	28.0%	31,178	28.2%	100,106	31.0%
Now Married (2009)	6,636	53.1%	59,901	54.1%	163,901	50.8%
Separated (2009)	397	3.2%	3,281	3.0%	12,961	4.0%
Widowed (2009)	409	3.3%	3,901	3.5%	11,115	3.4%
Divorced (2009)	1,556	12.4%	12,384	11.2%	34,478	10.7%
<b>Household Type</b>						
Population Family (2009)	13,627	83.8%	116,912	82.6%	337,424	80.3%
Population Non-Family (2009)	2,565	15.8%	23,855	16.9%	80,528	19.2%
Population Group Qtrs (2009)	67	0.4%	772	0.5%	2,172	0.5%
Family Households (2009)	3,585	67.7%	31,674	65.9%	88,995	63.0%
Married Couple With Children (2009)	1,404	21.2%	11,817	19.7%	34,067	20.8%
Average Family Household Size (2009)	3.80		3.69		3.79	
Non-Family Households (2009)	1,714	32.3%	16,423	34.1%	52,284	37.0%
<b>Household Size</b>						
1 Person Household (2009)	1,261	23.8%	12,239	25.4%	38,094	27.0%
2 Person Households (2009)	1,108	20.9%	10,855	22.6%	30,435	21.5%
3 Person Households (2009)	656	12.4%	5,854	12.2%	16,332	11.6%
4 Person Households (2009)	1,272	24.0%	10,855	22.6%	30,810	21.8%
5 Person Households (2009)	593	11.2%	5,010	10.4%	14,743	10.4%
6+ Person Households (2009)	408	7.7%	3,284	6.8%	10,865	7.7%
<b>Household Vehicles</b>						
Total Vehicles Available (2009)	10,156		91,936		257,037	
Household: 0 Vehicles Available (2009)	228	4.3%	1,886	3.9%	8,384	5.9%
Household: 1 Vehicles Available (2009)	1,594	30.1%	15,655	32.5%	50,306	35.6%
Household: 2+ Vehicles Available (2009)	3,478	65.6%	30,556	63.5%	82,589	58.5%
Average Vehicles Per Household (2009)	1.9		1.9		1.8	

This report was produced using data from private and government sources deemed to be reliable. The information herein is provided without representation or warranty.

# DEMOGRAPHIC PROFILE EXPANDED

1990 - 2000 Census, 2009 Estimates & 2014 Projections

Calculated using Proportional Block Groups

Prepared For



Lat/Lon: 33.349567/-111.876504

February 2010

RF5

## N Dobson Rd & W Elliot Rd Chandler, Arizona

	1.00 mi radius		3.00 mi radius		5.00 mi radius	
<b>Labor Force</b>						
Est. Labor: Population Age 16+ (2009)	12,240		108,412		316,571	
Est. Civilian Employed (2009)	8,733	71.3%	75,354	69.5%	214,955	67.9%
Est. Civilian Unemployed (2009)	490	4.0%	4,598	4.2%	15,546	4.9%
Est. in Armed Forces (2009)	10	0.1%	85	0.1%	312	0.1%
Est. not in Labor Force (2009)	3,007	24.6%	28,376	26.2%	85,758	27.1%
<b>Occupation</b>						
Occupation: Population Age 16+ (2000)	9,344		74,229		202,020	
Mgmt, Business, & Financial Operations (2000)	1,442	15.4%	13,066	17.6%	31,290	15.5%
Professional and Related (2000)	2,077	22.2%	18,000	24.2%	46,097	22.8%
Service (2000)	1,044	11.2%	8,140	11.0%	25,715	12.7%
Sales and Office (2000)	2,873	30.8%	22,713	30.6%	59,592	29.5%
Farming, Fishing, and Forestry (2000)	27	0.3%	160	0.2%	520	0.3%
Construct, Extraction, & Maintenance (2000)	855	9.1%	5,578	7.5%	17,644	8.7%
Production, Transp. & Material Moving (2000)	1,026	11.0%	6,573	8.9%	21,163	10.5%
Percent White Collar Workers (2000)	68.4%		72.4%		67.8%	
Percent Blue Collar Workers (2000)	31.6%		27.6%		32.2%	
<b>Consumer Expenditure (in \$,000,000s)</b>						
Total Household Expenditure (2009)	\$285		\$2,832		\$7,788	
Total Non-Retail Expenditures (2009)	\$165	57.9%	\$1,640	57.9%	\$4,503	57.8%
Total Retail Expenditures (2009)	\$120	42.1%	\$1,192	42.1%	\$3,285	42.2%
Apparel (2009)	\$14	4.8%	\$136	4.8%	\$376	4.8%
Contributions (2009)	\$10	3.6%	\$109	3.8%	\$293	3.8%
Education (2009)	\$7	2.4%	\$72	2.5%	\$196	2.5%
Entertainment (2009)	\$16	5.6%	\$160	5.6%	\$438	5.6%
Food And Beverages (2009)	\$43	15.2%	\$427	15.1%	\$1,183	15.2%
Furnishings And Equipment (2009)	\$13	4.5%	\$128	4.5%	\$349	4.5%
Gifts (2009)	\$7	2.6%	\$77	2.7%	\$208	2.7%
Health Care (2009)	\$17	5.9%	\$165	5.8%	\$460	5.9%
Household Operations (2009)	\$10	3.6%	\$106	3.7%	\$287	3.7%
Miscellaneous Expenses (2009)	\$5	1.7%	\$46	1.6%	\$128	1.6%
Personal Care (2009)	\$4	1.5%	\$41	1.4%	\$113	1.4%
Personal Insurance (2009)	\$3	1.0%	\$30	1.1%	\$82	1.0%
Reading (2009)	\$1	0.3%	\$9	0.3%	\$25	0.3%
Shelter (2009)	\$55	19.3%	\$548	19.3%	\$1,504	19.3%
Tobacco (2009)	\$2	0.6%	\$17	0.6%	\$48	0.6%
Transportation (2009)	\$58	20.4%	\$568	20.1%	\$1,563	20.1%
Utilities (2009)	\$20	6.9%	\$192	6.8%	\$536	6.9%
<b>Educational Attainment</b>						
Adult Population (25 Years or Older) (2009)	10,234		90,269		258,232	
Elementary (0 to 8) (2009)	342	3.3%	3,054	3.4%	16,779	6.5%
Some High School (9 to 11) (2009)	630	6.2%	4,620	5.1%	15,615	6.0%
High School Graduate (12) (2009)	2,710	26.5%	19,779	21.9%	57,250	22.2%
Some College (13 to 16) (2009)	2,789	27.3%	21,671	24.0%	58,691	22.7%
Associate Degree Only (2009)	1,092	10.7%	8,720	9.7%	23,153	9.0%
Bachelor Degree Only (2009)	1,802	17.6%	20,067	22.2%	54,689	21.2%
Graduate Degree (2009)	869	8.5%	12,357	13.7%	32,055	12.4%

This report was produced using data from private and government sources deemed to be reliable. The information herein is provided without representation or warranty.

# DEMOGRAPHIC PROFILE EXPANDED

1990 - 2000 Census, 2009 Estimates & 2014 Projections

Calculated using Proportional Block Groups

Prepared For



Lat/Lon: 33.349567/-111.876504

February 2010

RF5

## N Dobson Rd & W Elliot Rd Chandler, Arizona

	1.00 mi radius		3.00 mi radius		5.00 mi radius	
<b>Units In Structure</b>						
1 Detached Unit (2000)	4,838	81.2%	33,907	66.8%	83,455	57.4%
1 Attached Unit (2000)	396	6.7%	4,564	9.0%	9,964	6.9%
2 to 4 Units (2000)	131	2.2%	1,955	3.9%	7,441	5.1%
5 to 9 Units (2000)	160	2.7%	3,214	6.3%	10,492	7.2%
10 to 19 Units (2000)	176	3.0%	2,269	4.5%	9,284	6.4%
20 to 49 Units (2000)	71	1.2%	873	1.7%	4,995	3.4%
50 or more Units (2000)	171	2.9%	3,418	6.7%	14,824	10.2%
Mobile Home or Trailer (2000)	11	0.2%	508	1.0%	4,597	3.2%
Other Structure (2000)	0		15	0.0%	270	0.2%

	1.00 mi radius		3.00 mi radius		5.00 mi radius	
<b>Homes Built By Year</b>						
Homes Built 1999 to 2000	14	0.2%	853	1.7%	4,019	2.8%
Homes Built 1995 to 1998	87	1.5%	4,287	8.5%	19,680	13.5%
Homes Built 1990 to 1994	213	3.6%	5,607	11.1%	18,430	12.7%
Homes Built 1980 to 1989	3,179	53.4%	21,453	42.3%	47,912	33.0%
Homes Built 1970 to 1979	2,367	39.8%	16,790	33.1%	38,557	26.5%
Homes Built 1960 to 1969	74	1.2%	1,143	2.3%	11,374	7.8%
Homes Built 1950 to 1959	13	0.2%	427	0.8%	3,516	2.4%
Homes Built Before 1949	8	0.1%	162	0.3%	1,836	1.3%

	1.00 mi radius		3.00 mi radius		5.00 mi radius	
<b>Home Values</b>						
Home Values \$1,000,000 or More (2000)	0		18	0.1%	53	0.1%
Home Values \$500,000 to \$999,999 (2000)	7	0.2%	202	0.6%	437	0.6%
Home Values \$400,000 to \$499,999 (2000)	0		284	0.9%	573	0.7%
Home Values \$300,000 to \$399,999 (2000)	97	2.2%	724	2.2%	1,715	2.2%
Home Values \$200,000 to \$299,999 (2000)	82	1.9%	3,305	10.2%	8,848	11.4%
Home Values \$150,000 to \$199,999 (2000)	321	7.4%	6,012	18.6%	14,702	19.0%
Home Values \$100,000 to \$149,999 (2000)	2,910	66.8%	16,718	51.8%	35,753	46.2%
Home Values \$70,000 to \$99,999 (2000)	898	20.6%	4,481	13.9%	12,445	16.1%
Home Values \$50,000 to \$69,999 (2000)	40	0.9%	441	1.4%	2,183	2.8%
Home Values \$25,000 to \$49,999 (2000)	2	0.0%	63	0.2%	522	0.7%
Home Values \$0 to \$24,999 (2000)	0		31	0.1%	180	0.2%
Owner Occupied Median Home Value (2000)	\$118,291		\$144,199		\$142,866	
Renter Occupied Median Rent (2000)	\$834		\$755		\$674	

	1.00 mi radius		3.00 mi radius		5.00 mi radius	
<b>Transportation To Work</b>						
Drive to Work Alone (2000)	7,482	80.0%	60,993	82.1%	156,913	77.6%
Drive to Work in Carpool (2000)	1,200	12.8%	8,148	11.0%	27,517	13.6%
Travel to Work - Public Transportation (2000)	49	0.5%	557	0.8%	3,159	1.6%
Drive to Work on Motorcycle (2000)	55	0.6%	344	0.5%	971	0.5%
Walk or Bicycle to Work (2000)	131	1.4%	1,399	1.9%	6,350	3.1%
Other Means (2000)	56	0.6%	335	0.5%	1,024	0.5%
Work at Home (2000)	378	4.0%	2,521	3.4%	6,377	3.2%

	1.00 mi radius		3.00 mi radius		5.00 mi radius	
<b>Travel Time</b>						
Travel to Work in 14 Minutes or Less (2000)	1,980	22.1%	17,181	23.9%	49,132	25.1%
Travel to Work in 14 to 29 Minutes (2000)	4,305	48.0%	31,991	44.6%	83,642	42.7%
Travel to Work in 30 to 59 Minutes (2000)	2,357	26.3%	20,224	28.2%	55,050	28.1%
Travel to Work in 60 Minutes or More (2000)	332	3.7%	2,383	3.3%	8,109	4.1%
Average Travel Time to Work (2000)	21.7	mins	22.1	mins	22.4	mins

This report was produced using data from private and government sources deemed to be reliable. The information herein is provided without representation or warranty.